

SUBSTRUCTURE

PANELS

TOP LAYERS

ACCESSORIES

## Product Sheet

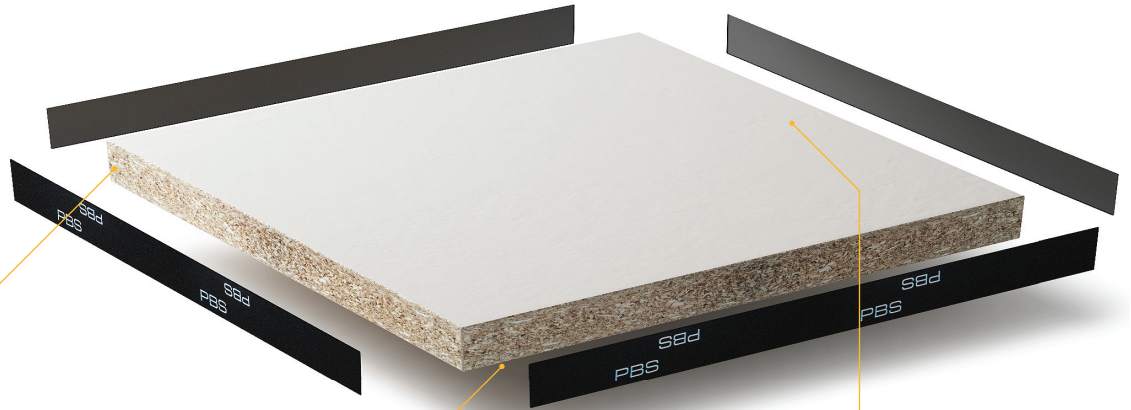
# MM 6/38 PANEL

The ideal panel for a top layer to be applied in the factory, available with FSC® or PEFC Certificate.

Page

1/2

*PBS accepts no liability whatsoever for any direct or indirect damages, of any nature whatsoever arising from the information on this product sheet.*



### Panels Chipboard Core

**Thickness**  
38 mm, not including the top layer to be applied in the factory

**Material**  
High density chipboard (approx. 690 kg/m<sup>3</sup>)

### Panels Underlay

**Thickness**  
Ca. 0.2 mm.

**Material**  
Melamine Coating

### Panels Top Layer

**Thickness**  
Ca. 0.2 mm.

**Material**  
Melamine Coating

### Description

This type of panel is extremely suitable for use in office environments with carpeting afterwards. The chipboard core is covered on both sides with a thin melamine coating. This white finish serves as a base and carrier for a glue to be applied once laid and on which carpet tiles, for example, can be glued.

### Sustainability

PBS uses raw materials from sustainable sources wherever possible. This reflects in the fact that we are certified to supply floors with a FSC® or PEFC hallmark. Panels with this hallmark are made of wood from certified forests and make a large contribution to making buildings sustainable. This reflects in a better assessment from a Breeam certification.



The mark of responsible forestry



www.pefc.nl

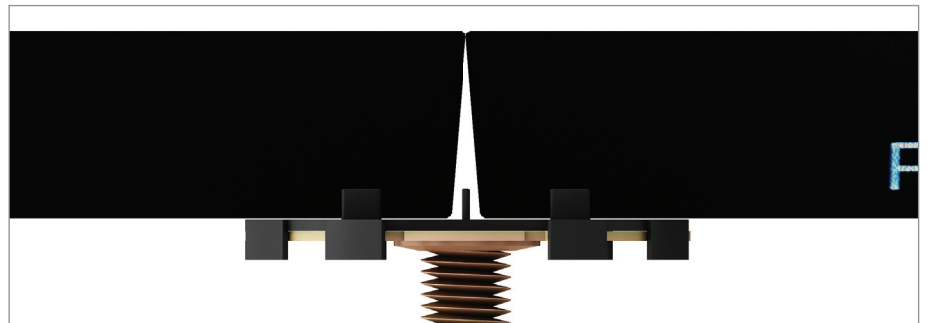
**pbs**  
raised access floors



# MM 6/38 PANEL



*This type of panel is approx. 38 mm thick not including the top layer to be applied afterwards.*



## Dimensions

### L x W x H

600 mm x 600 mm x 38 mm (excluding top layer)

### Core

High density chipboard (approx. 690 kg/m<sup>3</sup>)

### Finishing Top-side

Melamine coating

### Finishing Bottom

Melamine coating

### Panel Weight

Approx. 9 kg

### System Weight

Approx. 27 kg/ m<sup>2</sup> (without top layer, based on pedestal type 1, AH = 250)

## Load Capacity

### Load with 2mm sag

Minimum 3 kN

### Breaking Load

Minimum 11 kN

## Electrical Conductivity

N.a.

This panel has good insulating properties.

The top layer can also be made antistatic.

## Top Layer Matrix

Carpet tiles, applied afterwards	
Carpet, factory applied	
Wall to wall floor coverings	
PVC tiles, applied afterwards	
Linoleum, PVC or rubber, factory applied	
Bamboo, factory applied	
Parquet, factory applied	
Composite Tiles or Natural Stone, factory applied	
Specials	

