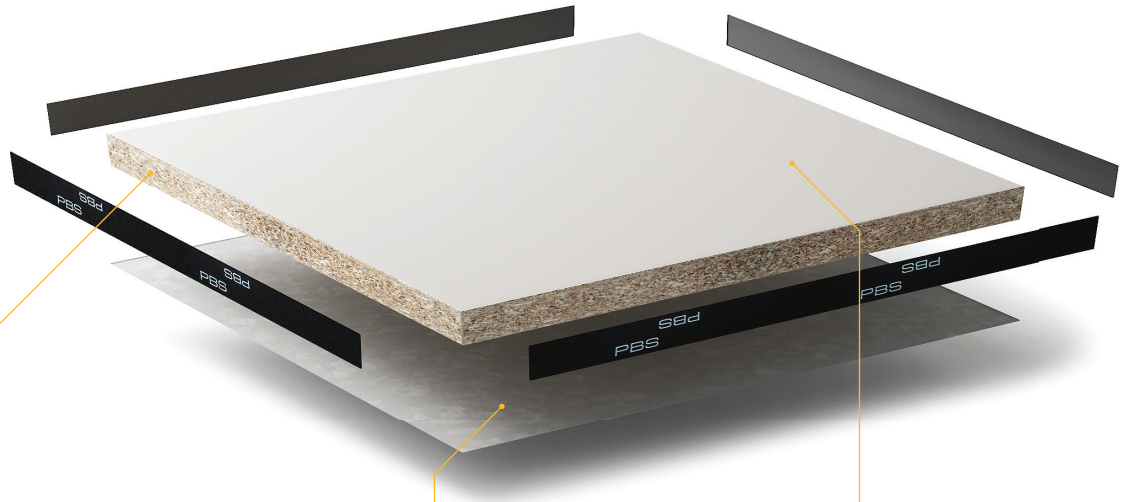


Product Sheet

MST 6/30 PANEL

The ideal panel for a top layer to be applied in the factory, available with FSC® or PEFC Certificate.

PBS accepts no liability whatsoever for any direct or indirect damages, of any nature whatsoever arising from the information on this product sheet.



Panels Chipboard Core

Thickness
30 mm, excluding top layer

Material
High density chipboard (approx. 690 kg/m³)

Panels Underlay

Thickness
0.5 mm

Material
Galvanised steel sheeting

Panels Top Layer

Thickness
Ca. 0.2 mm

Material
Melamine Coating

Description

This type of panel is extremely suitable for use in office environments with carpeting afterwards. The chipboard core is covered on both sides with a thin melamine coating. This white finish serves as a base and carrier for a glue to be applied once laid and on which carpet tiles, for example, can be glued. A 0.5 mm steel plate is mounted under high pressure underneath to increase the mechanical strength.

Sustainability

PBS uses raw materials from sustainable sources wherever possible. This reflects in the fact that we are certified to supply floors with a FSC® or PEFC hallmark. Panels with this hallmark are made of wood from certified forests and make a large contribution to making buildings sustainable. This reflects in a better assessment from a Breeam certification.



The mark of
responsible forestry

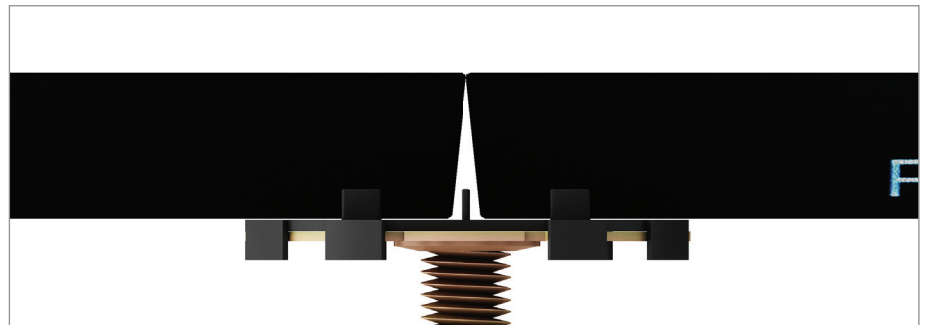




MST 6/30 PANEL



This type of panel is approx. 30 mm thick not including the top layer to be applied afterwards.



Dimensions

L x W x H

600 mm x 600 mm x 30.5 mm (excluding top layer)

Core

High density chipboard (approx. 690 kg/m³)

Finishing Top-side

Melamine coating

Finishing Bottom

0.05 mm galvanised steel plate

Panel Weight

Approx. 9 kg

System Weight

Approx. 27 kg/ m² (without top layer, based on pedestal type 1, AH = 250)

Electrical Conductivity

N.a.

This panel has good insulating properties. The top layer can also be made antistatic.

Top Layer Matrix

Carpet tiles, applied afterwards	
Carpet, factory applied	
Wall to wall floor coverings	
PVC tiles, applied afterwards	
Linoleum, PVC or rubber, factory applied	
Bamboo, factory applied	
Parquet, factory applied	
Composite Tiles or Natural Stone, factory applied	
Specials	

